

## 1. Notice

### \* Precautions for upgrading the firmware

It is possible to upgrade the functions of all the digital cameras manufactured by Samsung through firmware. To upgrade the firmware, download the latest firmware file from the Samsung Camera Website, check how to upgrade the firmware menu, and proceed with the upgrade.

### \* Before upgrading the firmware

1. Make sure you use fully charged batteries. It is recommended that you use an AC adaptor for cameras that have an AC adaptor.

If fully charged batteries are not used, or the power is cut during a firmware upgrade, the mainboard may be seriously damaged, resulting in camera malfunction. Therefore it is absolutely essential to use fully charged batteries or an AC adaptor. If camera malfunction is caused during a firmware upgrade for the reasons given above, the mainboard may have to be serviced by a Samsung service centre, which may result in major repair charges.

2. Before upgrading the firmware, make sure that you format the memory card on your PC or camera and then download the necessary firmware file. Since the MMC (MultiMediaCard) may not be suitable for firmware upgrade, depending on the model, check before you proceed with upgrading the firmware.

3. Download the firmware file into the root directory of the memory card. Also check that the firmware file downloaded has the correct file name for the camera model.

4. To upgrade firmware there should be sufficient free space on the memory card for the size of the firmware file. If the firmware upgrade is not completed because of insufficient memory space, delete some of the files saved on the memory to secure more free space and then try

---

again.

5. Do not operate the camera, remove the batteries, or cut the power while upgrading firmware. Operate the camera only after the firmware upgrade is complete.

6. Once the firmware is upgraded, it is not possible to restore the earlier version of the firmware. When the firmware is upgraded, all the camera settings are set to their default values. Since all the files stored in the internal memory (image files, MP3 files or PMP files) will be deleted, ensure that files are copied to other storage devices before upgrading firmware.

7. Before downloading firmware, make sure you read the Software Use Terms Conditions. The act of downloading the firmware is taken to mean that you have agreed to the Software Use Terms and Conditions.

Should you need further detailed information, or if you experience difficulty in upgrading firmware, do not proceed with the process on your own. Visit a Samsung service centre near you.

## 2. Added Functions in New Version

Thank you for using the Samsung GX-10 digital camera. Firmware version 1.30 with added functions for the GX-10 has been released.

\* Details of added functions

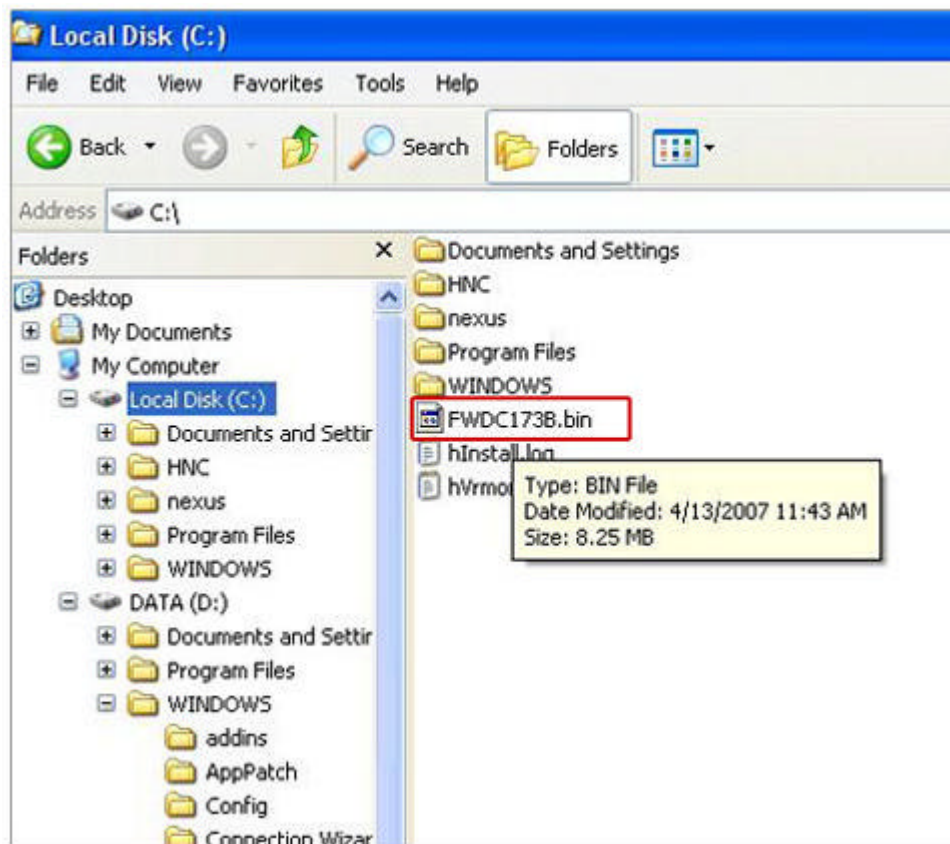
- 1) A built-in flash function in wireless mode has been added.
  - 2) A function that shifts the AF point from "SELECT" to the centre has been added.
  - 3) A function for changing the ISO setting using the e-dials in Tv/Av modes has been added.
  - 4) A function that can change the ISO sensitivity displayed on the upper LCD panel by using the front e-dial has been added.
  - 5) The green button function available in M mode has been added to Tv/Av modes.
  - 6) A function for switching the Av/Tv settings between the front and rear e-dials has been added.
-

- 
- 7) A function that sets the strobe light compensation to its default value, using the green button, has been added.
  - 8) A function that displays the memory size when a memory card is formatted has been added.
  - 9) An improvement in accuracy of controlling exposure when using an external flash.
  - 10) A compatibility with SDM lens(Called Ultrasonic Lens) made in PENTAX has been added.

### 3. How to Upgrade the Firmware

Caution: If the batteries are completely discharged during the firmware upgrade, camera malfunction may occur. Make sure to use fully charged batteries for safety. Ensure that you format the SD card before using it, and then save the firmware file on the formatted SD card.

\* Download the firmware file into the root directory of the SD memory card.  
Check that the firmware file name is FWDC173B.bin.



---

\* Insert fully charged batteries into the camera.

\* Insert the SD card on which the firmware file is to be saved.



\* Close the SD card cover of the camera.



---

\* While pressing down the MENU button, turn the main switch ON.



\* When the following symbol appears on the LCD monitor, select YES, and then press the OK button.



The firmware upgrade begins as in the picture below. It takes about 60 seconds.

\* Do not turn off the camera.

---



\* When the firmware upgrade is successfully carried out, the message “COMPLETE” appears.  
Turn the main switch of the camera to OFF.

